

Tool Boards & Panels



Tel: 0800 8600 623

Fax: 01803 231 136

E-mail: sales@wmfuk.co.uk

Web: www.wmfuk.co.uk

WMF

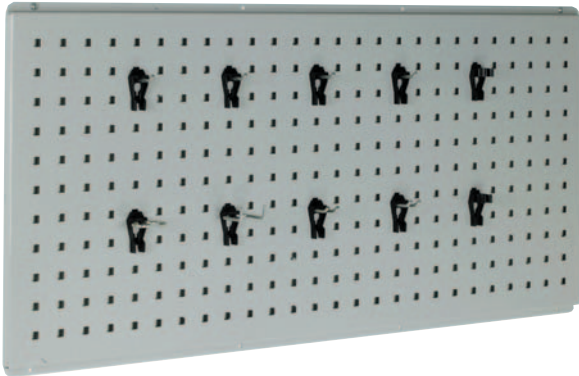
165 Lymington Road, Torquay,
Devon, TQ1 4BA

Wall panels - tool, louvre or combination

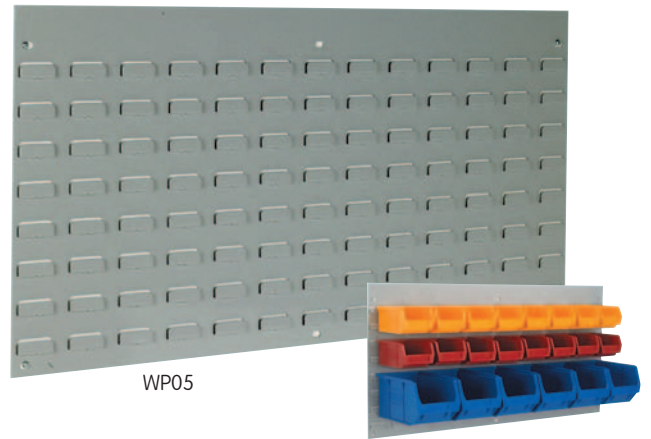
Wall panels enable you to keep small parts and tools ready to hand

Available with or without bins
Fixing holes included (fixings not supplied)

All panels 470mm high

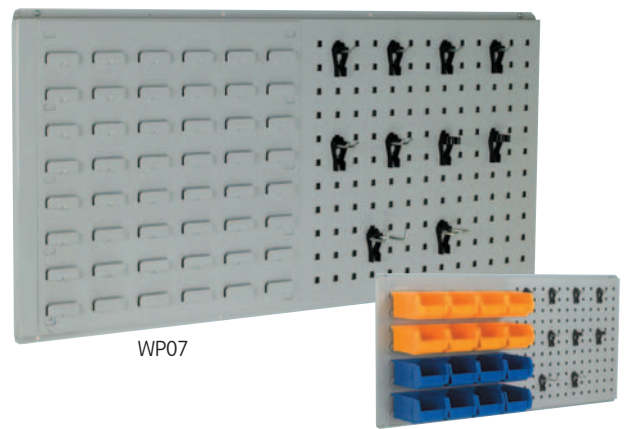


WP02



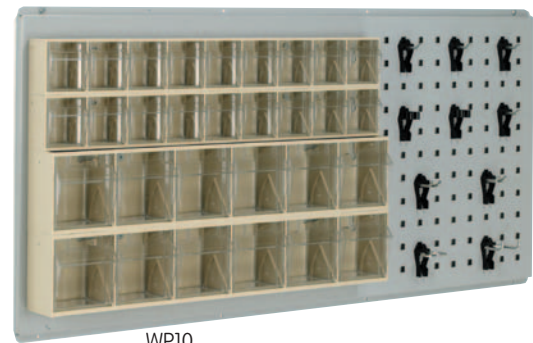
WP05

WP06



WP07

WP08



WP10

Type	width mm	Bins / hooks	Ref
Tool panel			
	500	10 hooks	WP01
	1000	10 hooks	WP02
	1500	10 hooks	WP15
	2000	10 hooks	WP20
Louvre panel			
	500		WP03
	500	16x No2	WP04
	1000		WP05
	1000	16x No2, 6x No3	WP06
	1500		WP16
Combination - louvre / tool			
	1000	10 hooks	WP07
	1000	16x no2, 10 hooks	WP08
Combination - Tilt bin / tool			
	1000	30 tilt bins, 10 hooks	WP09



Bin container packs

Choose your own selection of bins for use with louvre panels
Packs of same size bins only

Available in 4 sizes

Size	H x W x L mm	pack	Ref
No 2	70 x 100 x 165	20	PBP2
No 3	125 x 150 x 240	10	PBP3
No 4	125 x 200 x 355	10	PBP4
No 5	175 x 200 x 355	10	PBP5

Tool hooks

Range of tool hooks and holders for use with tool panels
(tools not included)



CP1 Single hook



CP4 Pliers hook



CP7 Drill bit holder



CP2 Double hook



CP5 Spring clip



CP8 Drill holder



CP3 angled hook



CP6 Pipe holder



CP9 Spanner holder

Hook description	size	Ref
Single hook	30mm lhog	CP1-30
	60mm long	CP1-60
	90mm long	CP1-90
Double hook	30mm long	CP2-30
	60mm long	CP2-60
Single angled hook	30mm long	CP3-30
	60mm long	CP3-60
Pliers holder	17mm long	CP4-17
	20mm long	CP4-20
Spring Clip	12mm dia	CP5-12
	18mm dia	CP5-18
	24mm dia	CP5-24
	30mm dia	CP5-30
Pipe holder	50mm dia	CP5-50
	22 bit capacity	CP7-22
Drill holder	2 hook pack	CP8-02
Spanner holder	8 slot	CP9-08
Can holder		CP10-01
Angle grinder holder		CP11-01
Hammer holder		CP12-01



CP10 Can holder



CP11 Angle grinder holder



CP12 Hammer holder

Louvre panel trolleys

'A' frame double sided louvre panel trolleys with integral sheet steel deck storage area
 Fully welded steel frame construction with bolt-on louvre panels
 Tubular push/pull handle
 Available in 2 heights (2 or 3 panels)
 Overall heights: 1220mm and 1600mm
 Base L x W: 1000 x 600mm
 Deck height: 205mm
 Wheels: 2 swivel braked and 2 fixed 125mm castors with blue resilex wheels and roller bearings.
 Finish: Grey epoxy trolley (BS00A05) with Blue panels (BS18E53)
 Capacity 200kg



For additional bin packs,
 see p134



Double sided louvre panel trolley - 2 panel high
 Ref: **LPT-12**



Double sided louvre panel trolley - 3 panel high
 Ref: **LPT-13**



Double sided louvre panel trolley - 2 panel high
 complete with 72 x XL2 & 36 x XL3 bins
 Ref: **LPT-12C** (bin colours as shown)



Double sided louvre panel trolley - 3 panel high
 complete with 108 x XL3 bins
 Ref: **LPT-13C** (bin colours as shown)

Tool panel trolleys

'A' frame double sided tool panel trolleys with integral sheet steel deck storage area

Fully welded steel frame construction with bolt-on tool panels

Tubular push/pull handle

Available in 2 heights (2 or 3 panels)

Overall heights: 1220mm and 1600mm

Base L x W: 1000 x 600mm

Deck height: 205mm

Wheels: 2 swivel braked and 2 fixed 125mm castors with blue resilex wheels and roller bearings.

Finish: Grey epoxy trolley (BS00A05) with Blue panels (BS18E53)

Capacity 200kg



Double sided tool panel trolley - 2 panel high
Ref: **LPT-02**



Double sided tool panel trolley - 3 panel high
Ref: **LPT-03**

Static Tool panel

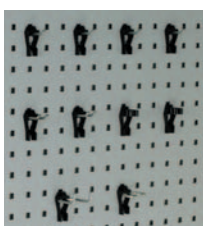
Double sided static tool panel, manufactured from 18 and 20swg sheet steel

Welded frame construction with bolt-in tool panels

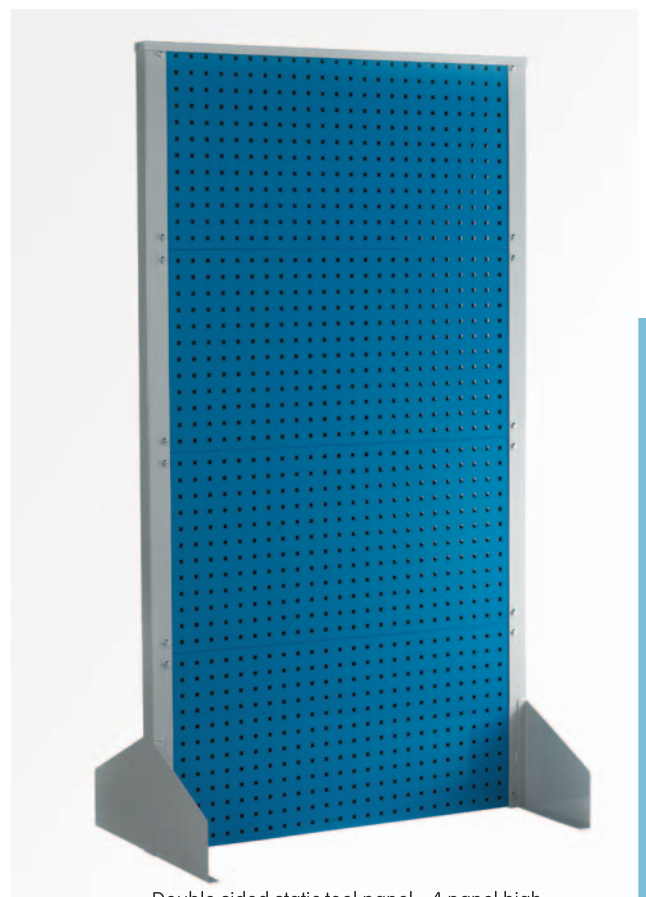
This unit requires to be fixed to floor for full stability - holes provided (fixings not supplied)

Overall H x W x D: 1840 x 1000 x 610mm

Finish: Grey epoxy trolley (BS00A05) with Blue panels (BS18E53)



For tool hooks - see p140



Double sided static tool panel - 4 panel high
Ref: **LPT-10**